



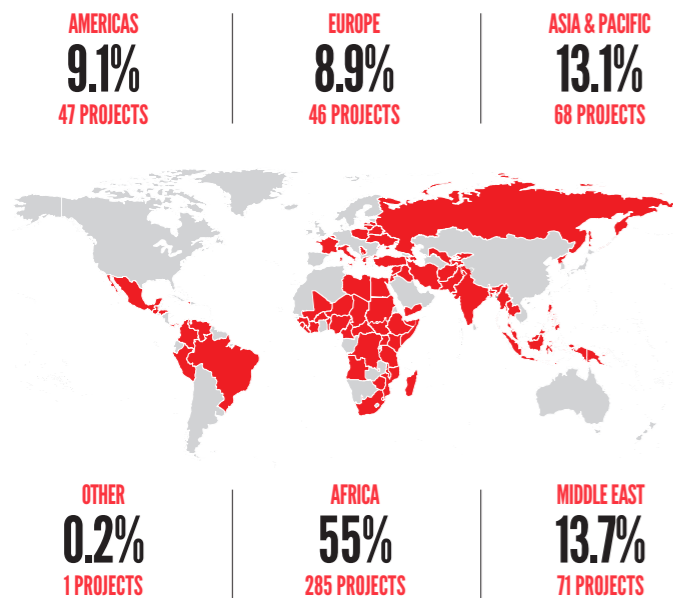
ANNUAL REPORT 2022

HOW YOU HELPED US PROVIDE MEDICAL CARE TO PEOPLE AROUND THE WORLD



DOCTORS WITHOUT BORDERS (MSF) SOUTHERN AFRICA

ACTIVITIES: 518 PROJECTS IN 73 COUNTRIES



THESE NUMBERS INDICATE THE PERCENTAGE OF MSF PROJECTS AROUND THE WORLD.

ON THE COVER
On the cover: A child plays with a balloon at Al-Sweida camp for internally displaced people in Marib, Yemen. © Hesham Al Hilali



INTERNATIONAL ACTIVITY

INTERNATIONAL STAFFING
90% OF PEOPLE WHO WORK FOR MSF GLOBALLY, WORK IN THE FIELD. THE MAJORITY ARE HIRED LOCALLY IN THE COUNTRIES OF INTERVENTION.



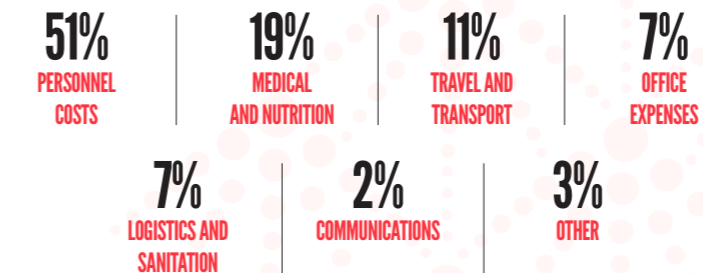
TOP FIVE COUNTRIES BY EXPENDITURE
TOTAL EXPENDITURE FOR 2022 WAS €2.1 BILLION. THESE ARE THE TOP 5 COUNTRIES:



MSF teams build toilets in Guereda district camps in Chad where hundreds of thousands of Sudanese people have taken refuge since fleeing their country. © Mohammad Ghannam.

INTERNATIONAL PROGRAMME EXPENSES BY CATEGORY

PERCENTAGES ARE ROUNDED OFF TO THE NEAREST WHOLE NUMBER.



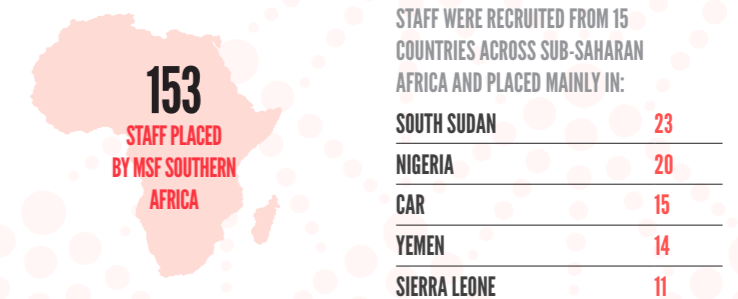
Essential items, including hygiene supplies and food, are distributed to community members who are affected by the conflict in Cabo Delgado's Montepuez district, Mozambique. © MSF



MSF teams travel 2 hours by speedboat in Ulang in South Sudan to reach communities displaced by floods. © Verity Kowal

REGIONAL ACTIVITY

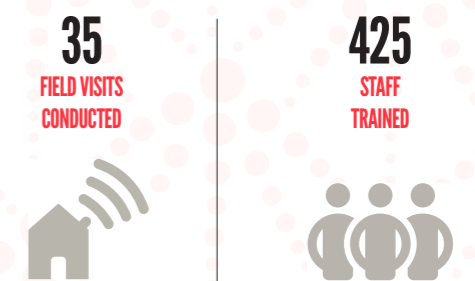
MSF SOUTHERN AFRICA FIELD-BASED HUMAN RESOURCES



Together with local partners, MSF installs boreholes to provide good-quality drinking water for communities affected by flash floods in KwaZulu-Natal. © MSF

MSF SOUTHERN AFRICA MEDICAL UNIT

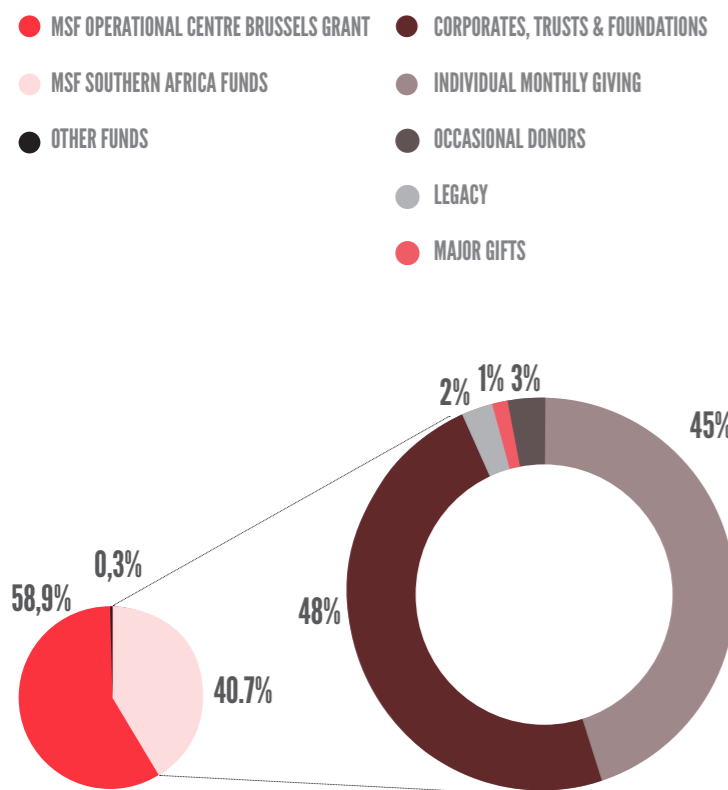
IN ADDITION TO TRAINING AND KNOWLEDGE TRANSFER RELATED TO HIV, TB AND DRUG-RESISTANT TB (DR-TB), AS WELL AS CLINICAL MONITORING, IN 2022, SAMU INCLUDED NON-COMMUNICABLE DISEASES AS PART OF THEIR TRAINING FOCUS.



2022 IN NUMBERS

WHERE THE FUNDS CAME FROM

In 2022, more than 29,000 individual donors from South Africa provided us with the majority of our funding.



REVENUE

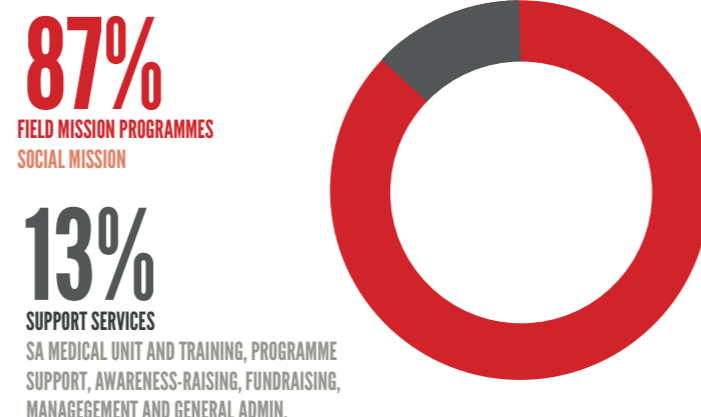
MSF Southern Africa is one of two sections in Africa and receives financial support from MSF's Belgium (MSF OCB) headquarters. The power of African donors is essential to enabling our capacity to negotiate access to people in precarious situations and conflicts.

2022 PRIVATE DONOR FUNDING CHANNELS	IN ZAR	
CHANNEL	2022	2021
INDIVIDUAL MONTHLY GIVING	33 231 025,00	30 982 791,00
MAJOR GIFTS	35 637 393,00	1 145 117,00
CORPORATES, TRUSTS & FOUNDATIONS	1 789 724,00	4 026 610,00
LEGACY	923 662,00	-
INDIVIDUAL OCCASIONAL DONORS	2 178 880,00	2 475 946,00
TOTAL CONTRIBUTIONS	73 760 684,00	38 630 464,00
GRANTS RECEIVED	106 727 695,00	83 067 648
OTHER INCOME	587 107,86	530 409
TOTAL REVENUE	181 075 486,86	122 228 521,00
TOTAL EXPENDITURE	181 640 448,33	124 504 510,76
SURPLUS NET / LOSS	564 961,47	-2 275 989,76

PLEASE VISIT WWW.MSF.ORG.ZA/NEWS-AND-RESOURCES/PUBLICATIONS/REPORTS/FINANCIAL-REPORTS FOR THE FULL ANNUAL FINANCIAL REPORT.

HOW WE SPENT YOUR FUNDS

MSF ensures independent, impartial and neutral medical care through income from private individual donors from around the world. 87% of this income goes directly to our field projects. This chart shows how donations received in Southern Africa were used.



EXPENDITURE

Social mission includes all costs related to operations and programmes in the field, as well as all the medical and operational support from the headquarters.

EXPENDITURE BY MISSION	IN ZAR	
	2022	2021
SOCIAL MISSION		
FIELD MEDICAL PROGRAMMES	64 117 420,27	31 746 449,00
SA MEDICAL UNIT AND TRAINING	22 773 538,80	23 155 851,00
PROGRAMME SUPPORT, STAFF RECRUITMENT & ADVOCACY	22 192 902,41	9 837 391,76
AWARENESS RAISING	9 690 038,54	8 527 331,00
TOTAL PROGRAMME / SOCIAL MISSION	118 773 900,02	73 267 022,76
SUPPORT SERVICES		
FUNDRAISING	38 498 088,83	32 786 004,00
MANAGEMENT AND GENERAL ADMINISTRATION	24 368 459,48	18 451 484,00
TOTAL SUPPORT SERVICES	62 866 548,31	51 237 488,00
TOTAL EXPENDITURE	181 640 448,33	124 504 510,76

STATEMENT OF FINANCIAL POSITION

The amounts for the statement of financial position are taken from the MSF Southern Africa unqualified audited financial statements in South African rands. An unqualified audit means that a complete audit has been performed and that auditors could not find any discrepancies and matters of concern in MSF Southern Africa's financial books.

ASSETS, EQUITIES & LIABILITIES	IN ZAR	
	2022	2021
ASSETS		
CURRENT ASSETS	68 753 153,00	29 634 084,60
NON CURRENT ASSETS	1 664 756,00	1 770 063,11
TOTAL ASSETS	70 417 909,00	31 404 147,71
EQUITY & LIABILITIES		
EQUITY	6 849 262,00	7 395 951,89
CURRENT LIABILITIES	63 568 647,00	24 008 195,82
TOTAL EQUITY & LIABILITIES	70 417 909,00	31 404 147,71

YOUR SUPPORT AT WORK IN 2022

PLEASE VISIT WWW.MSF.ORG.ZA FOR A FULL LIST OF COUNTRIES WHERE WE WORK

DEVASTATION ON OUR DOORSTEP

On 11th April 2022, the eThekweni region in the KwaZulu-Natal Province of South Africa was struck by devastating flash floods. Tragically, over 40,000 people were displaced from their homes and over 460 lives were lost.

"My 10-year-old son saw a house being swept away with all the family in it. I ran to assist, pulling people from the mud, but they were all dead," says Nozipho Sithole, who was forced to seek shelter at a school after her home was washed away. The trauma of losing loved ones and homes left many people like Nozipho despondent and in need of counselling.

With significant damage to water infrastructure, people were also left without clean water, making them vulnerable to waterborne diseases. MSF provided essential relief items to 500 people, installed 20 water tanks and drilled two boreholes, giving people access to safe water. Through mobile clinics we also offered primary healthcare and offered psychosocial support and counselling for people in distress.



A man looks out over where his house used to stand. It was washed away during the flash flooding in KwaZulu-Natal. © Sandile Ndlovu

ADAPTING HEALTHCARE DURING WAR

The escalation of the Ukraine war in 2022 presented MSF with several challenges. We had to rapidly expand our operations to address a wide range of needs, including the treatment of war-related physical and psychological trauma and pre-existing conditions like non-communicable diseases. Balancing the provision of care with ensuring the safety of our staff was a constant consideration.

To tackle some of these challenges, we tried to bring our services closer to affected people. This included a specially designed medical train to evacuate patients from danger zones, as well as mobile clinics that were set up in shelters and metro stations where displaced people sought refuge. Between 31 March and 6 June 2022, the medical train evacuated 653 patients by train from war-affected areas in the east to hospitals in safer parts of the country. The overwhelming majority of these patients suffered blast injuries, while the rest were suffering from war-related trauma. As of early 2023, the train continues to provide life-saving care.



An elderly woman is lifted into the MSF medical train used to evacuate patients from the frontlines in Ukraine. © Maurizio Debanne

UNPRECEDENTED RISE IN MALNUTRITION

Drought, bad harvests, collapsed health and economic systems, conflict and rising food prices are just some of the factors that contributed to the alarming and sometimes unprecedented levels of malnutrition we saw in Nigeria, Ethiopia, Kenya, Afghanistan, Chad and Yemen during the year. Across Somalia, between January and August of 2022, MSF screened over 206,000 children for malnutrition, finding 23,000 among them malnourished.

In the region of Baidoa, specifically, our teams were seeing, at times, 500 or more acutely malnourished children a week. "We have not seen anything like this since we started running malnutrition activities here in 2017," says Htet Aung Kyi, an MSF medical coordinator in Nigeria. "The number of weekly admissions is two to three times higher than that of the same period over the past five years – and it's still rising."



Ibrahim Sheriff is assessed for malnutrition by measuring the middle-upper arm circumference at the MSF-run Nilefa Kiji nutrition centre in Maiduguri, Nigeria. ©Abdulkareem Yakubu