

DOCTORS WITHOUT BORDERS RESPONDING TO THE CALL



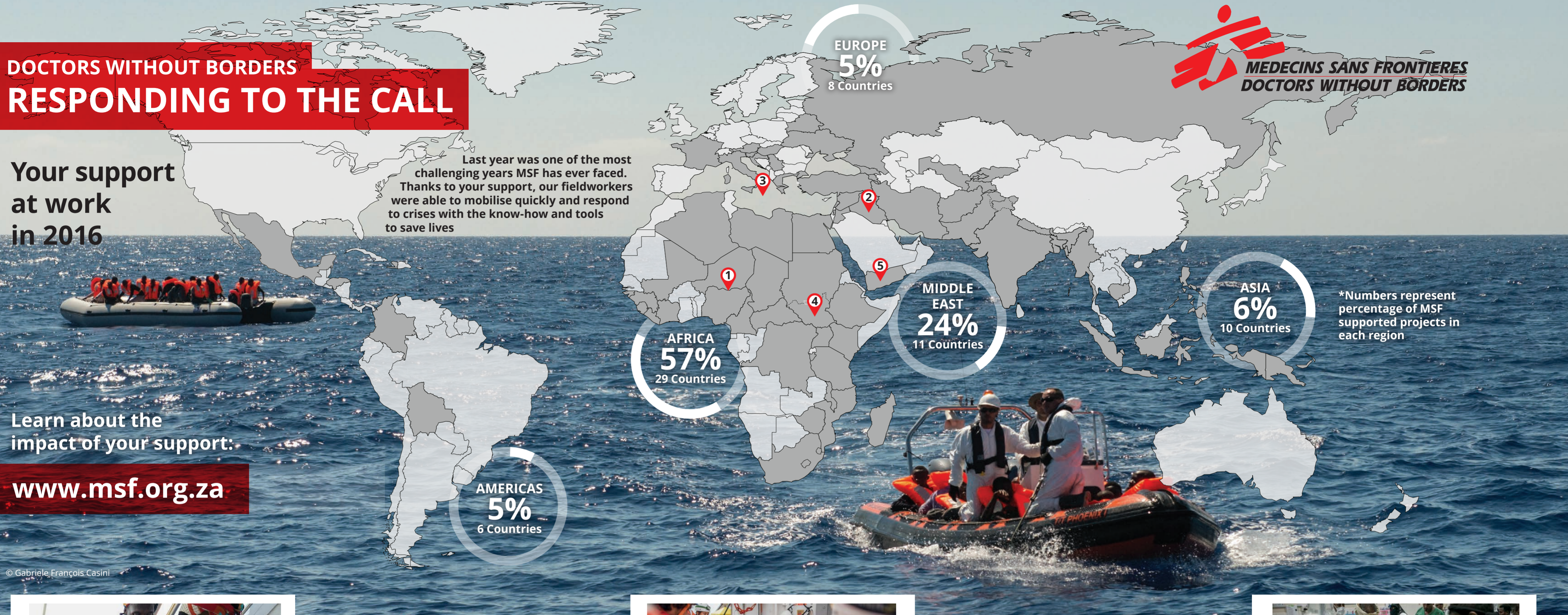
Your support
at work
in 2016

Last year was one of the most
challenging years MSF has ever faced.
Thanks to your support, our fieldworkers
were able to mobilise quickly and respond
to crises with the know-how and tools
to save lives

Learn about the
impact of your support:

www.msf.org.za

© Gabriele François Casini



*Numbers represent
percentage of MSF
supported projects in
each region



NIGERIA/NIGER

441,900 Outpatient consultations (Nigeria)
58,500 Patients treated for malaria

Responding in the critical 'golden hours'

"In Diffa, Niger we found people fleeing the violence along the border with Nigeria. They had no camp and were just out in the open. So we installed a mobile clinic near the main road, which created space for support programmes by other NGOs we lobbied to bring supplies including food and water. All in all we were able to respond within 72 hours. These 72 hours are the golden hours for any response, which is important. People walk all the way, some are pregnant, others sick. We needed emergency action to respond in a quick way, and we did."

- **Danca Paiva**
Logistician in Nigeria and Niger

MOSUL, IRAQ

133,000 Outpatient consultations
1,300 Births assisted

Hope amid the destruction of war

"The team in our hospital include medical staff from Mosul who can no longer work in their own hospitals, and international team members that have worked in multiple wars. It is especially difficult for those from Mosul to see the level of destruction and suffering. Some team members are picking up the pieces of their lives after fighting moved through this town only a few months ago. Our hospital is surrounded by destroyed homes. Everyone has lost someone in this war. But the team works around the clock, ready to adapt and find solutions to continue saving lives."

- **Jonathan Whittall**
MSF Head of Humanitarian Analysis/ fieldworker in Mosul



© Alice Martins



MEDITERRANEAN SEA

3 Search and rescue ships
21,603 People rescued

Desperate flight to safety

"People flee into the Med Sea to come to Europe not because they see it as an opportunity to get a better job; they are fleeing out of absolute desperation. I can see now why MSF decided to no longer accept EU money [after the 2016 EU-Turkey deal blocking migrants from entering member states]. MSF has had to speak out incredibly strongly about the fact that migrants and refugees are not being treated properly and the massive challenges they face. Anyone who thinks they make the decision to cross the Med and go to Europe lightly, are absolutely wrong."

- **Kate Stegeman**
Communications Manager on MV Aquarius

SOUTH SUDAN

934,400 Outpatient consultations
47,700 Measles vaccinations in response
to an outbreak

Going the distance

"When clashes erupted in the town of Birisi, most people fled into the forest near the DRC border. For one year, from July 2015, we had little or no contact with the villagers. We were very anxious as many who were HIV-positive were not getting the lifesaving antiretroviral drugs (ARVs) they needed. The isolation of these communities can cause problems. If an area is inaccessible, a community health worker from the villages will come out to meet us and take back several weeks of supplies for patients in his or her area. This really helped when the fighting was bad."

- **Hazel Mutinta Milimo**
Health Promoter working in Yambio, South Sudan



© Anna Kerber



YEMEN

435,500 Outpatient consultations
16,400 Surgical interventions

The invisible dead of this war

"It's hell on earth in Taiz. The airstrikes are never-ending, which makes people wait until the last minute to come for treatment and we end up losing patients because it's too late. They're the invisible dead of this war. There are lots of indirect victims: people with heart or kidney disease who can't get their medication, children with severe diarrhoea or respiratory infections who don't get treated in time. The health situation in Yemen is indescribable. It's a catastrophe that will inevitably impact the country's demography and age pyramid for years to come."

- **Hassan Boucenne**
former Head of Mission in Yemen



MSF volunteers help people in Italy who fled across the Mediterranean from the coast of Libya. © Alessandro Penso



A mother and her two children arrive at MSF's Tchabi health centre in the Democratic Republic of Congo. © Gabrielle Klein/MSF



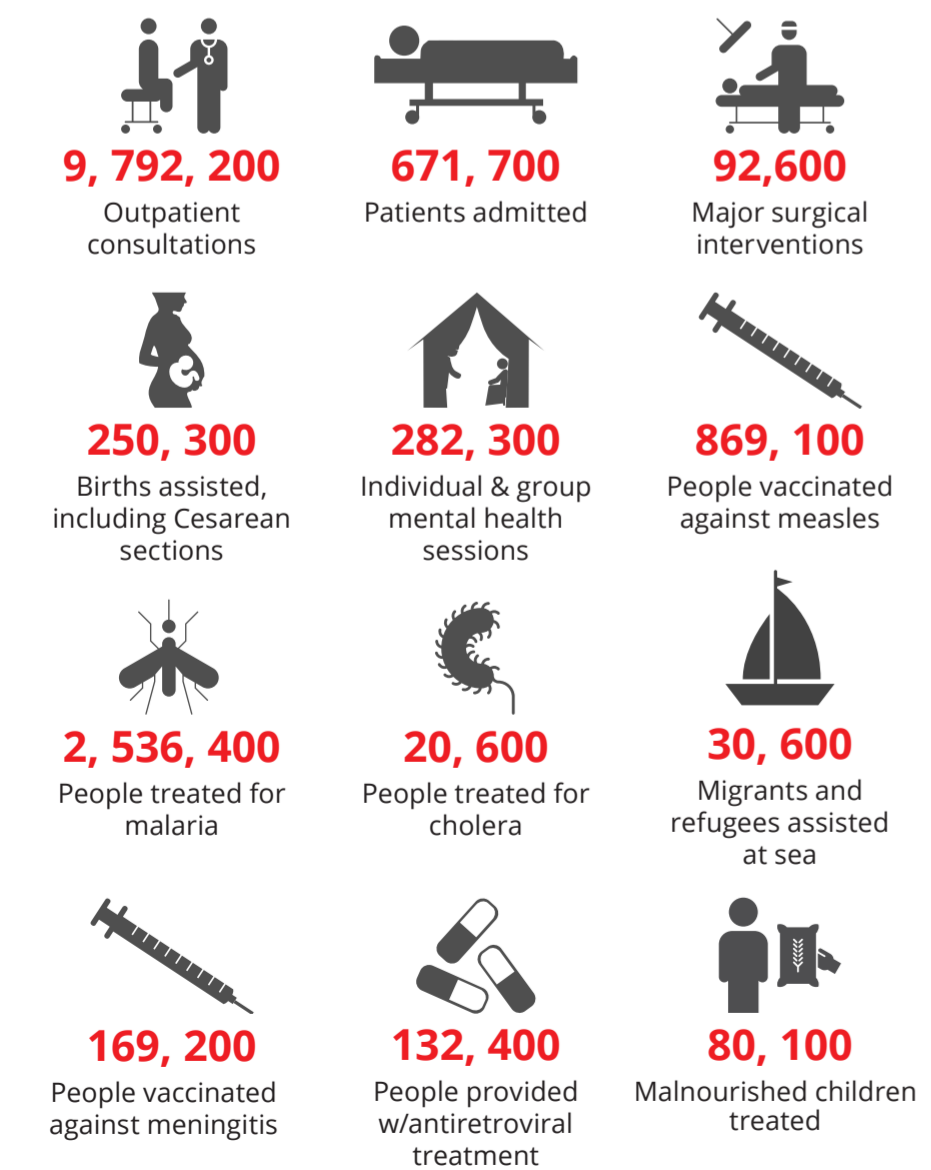
Patients arrive by MSF ambulance to a hospital in Port-au-Prince, Haiti. © Shino Fukada/Fanos



A doctor examines a young patient in MSF's Neonatal Intensive Care Unit in Brta, Central African Republic. © Lexie Cole

SAVING LIVES IN PHOTOS 2016

DOCTORS WITHOUT BORDERS 2016 BY THE NUMBERS



COVER: A boat in distress with some 650 people on board is rescued in the Mediterranean Sea by MSF's 'Bourbon Argos' search and rescue ship, and taken to Sicily, Italy.

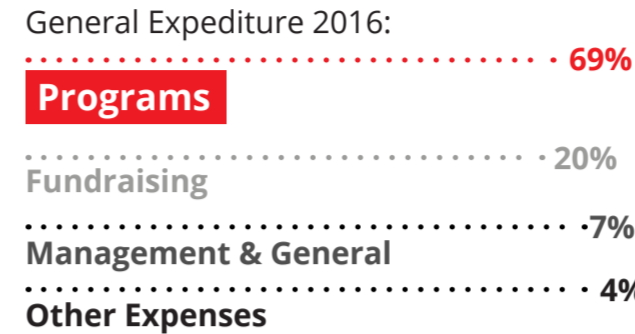
DOCTORS WITHOUT BORDERS ANNUAL REPORT 2016



© Francisco Zizola/NOOR

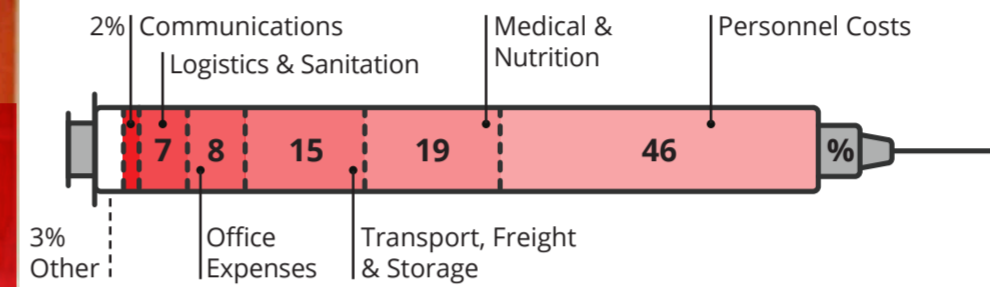
MEDECINS SANS FRONTIERES DOCTORS WITHOUT BORDERS

How We Spent Your Money



Note: 98% of MSF Southern Africa fundraising income went into the field.

International Program Expenses by Category



Note: Percentages represent MSF International program expenses and are rounded to the nearest whole number.

Doctors Without Borders (MSF) Southern Africa Statement of Activities

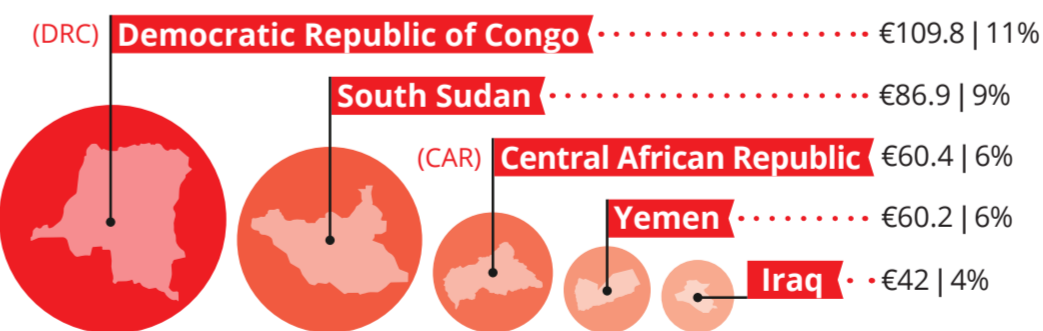
Expenses	2016	2015
Program Services	Rands (ZAR)	Rands (ZAR)
Emergency & medical programs	24,073,285.43	16,215,874.00
SAMU, Unitaid & Training	13,444,188.72	4,714,417.00
Program Support & Development	2,897,825.00	15,302,187.00
Field Staff	3,513,057.21	-
Communications	6,449,349.00	3,947,066.00
Total Program/ Social Mission	50,377,705.36	40,179,544.00
Supporting Services		
Management & General	5,441,529.00	8,279,099.00
Association & Board	1,893,310.64	-
Fundraising	14,849,155.00	12,947,743.00
SAMU Admin	845,209.00	-
Total Supporting Services	23,029,203.64	21,223,842.00
Total Expenses	73,406,909.00	61,403,386.00

International Activity

The following numbers are based on the work of Doctors Without Borders (MSF) movement/ internationally in 2016:

Largest Country Programs

Based on 2016 expenditures from all MSF offices (in millions of Euro):

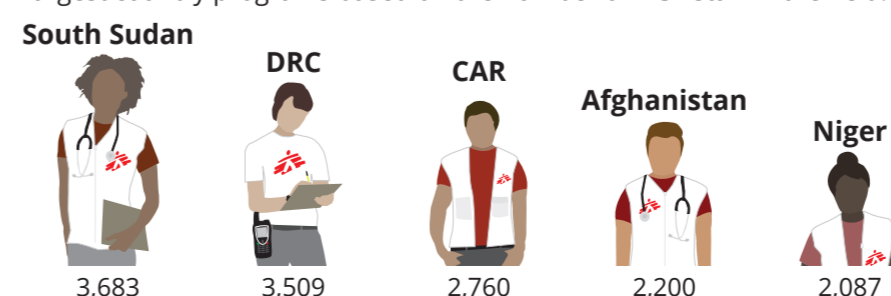


*Note: Numbers are quoted in Euro (€) currency.

Note: The majority of MSF staff (83 per cent) are hired locally in the countries of intervention. Headquarters staff represent 9 per cent of total staff.

Staff Numbers

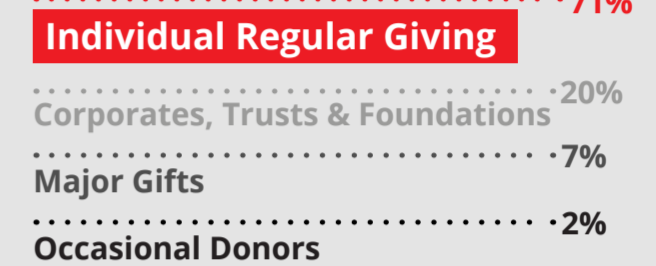
Largest country programs based on the number of MSF staff in the field:



DOCTORS WITHOUT BORDERS 2016 FINANCES & ACTIVITIES

Where The Money Came From

In 2016, individuals provided Doctors Without Borders (MSF) Southern Africa with the majority of our funding:



Revenue	2016	2015
Public Support	Rands (ZAR)	Rands (ZAR)
Individual Regular Giving	R17 504 735.00	R16 834 023.00
Major Gifts	R 1 793 400.00	R 1 389 171.00
Corporates, Trusts & Foundations	R 4 780 048.00	R 1 866 992.00
Occasional Donors	R 412 424.00	R 1 260 796.00
Total Contributions	R 24 490 607.00	R 21 350 982.00
Grants Received	R 45 393 072.00	R 35 099 356.00
Other Income	R 5 428 256.00	R 447 812.00
Total Revenue	R 75 311 935.00	R 56 898 150.00

Statement of Financial Position

Assets	2016	2015
Non-Current Assets		
Property, plant and equipment	681,540	763,369
Current Assets		
Amounts due from associated companies	1,647,792	2,554,888
Trade and other receivables	5,683,598	2,817,002
Cash and cash equivalents	5,840,668	9,506,497
Total Assets	13,172,058	14,878,387
Equity and Liabilities		
Equity		
Accumulated surplus	2,265,266	1,192,097
Liabilities		
Non-Current Liabilities		
Amounts due to associated companies	-	-
Other financial liability	8,158,703	-
Instalment sale liability	-	-
Total Non-Current Liabilities	8,158,703	-
Current Liabilities		
Amounts due to associated companies	39,994	366,456
Other financial liability	-	9,130,122
Trade and other payables	1,720,954	850,602
Instalment sale liability	-	-
Deferred income	1,668,681	4,102,479
Total Current Liabilities	3,429,629	14,449,659
Total Liabilities	11,588,332	14,449,659
Total Equity and Liabilities	13,853,598	15,641,756